


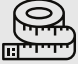
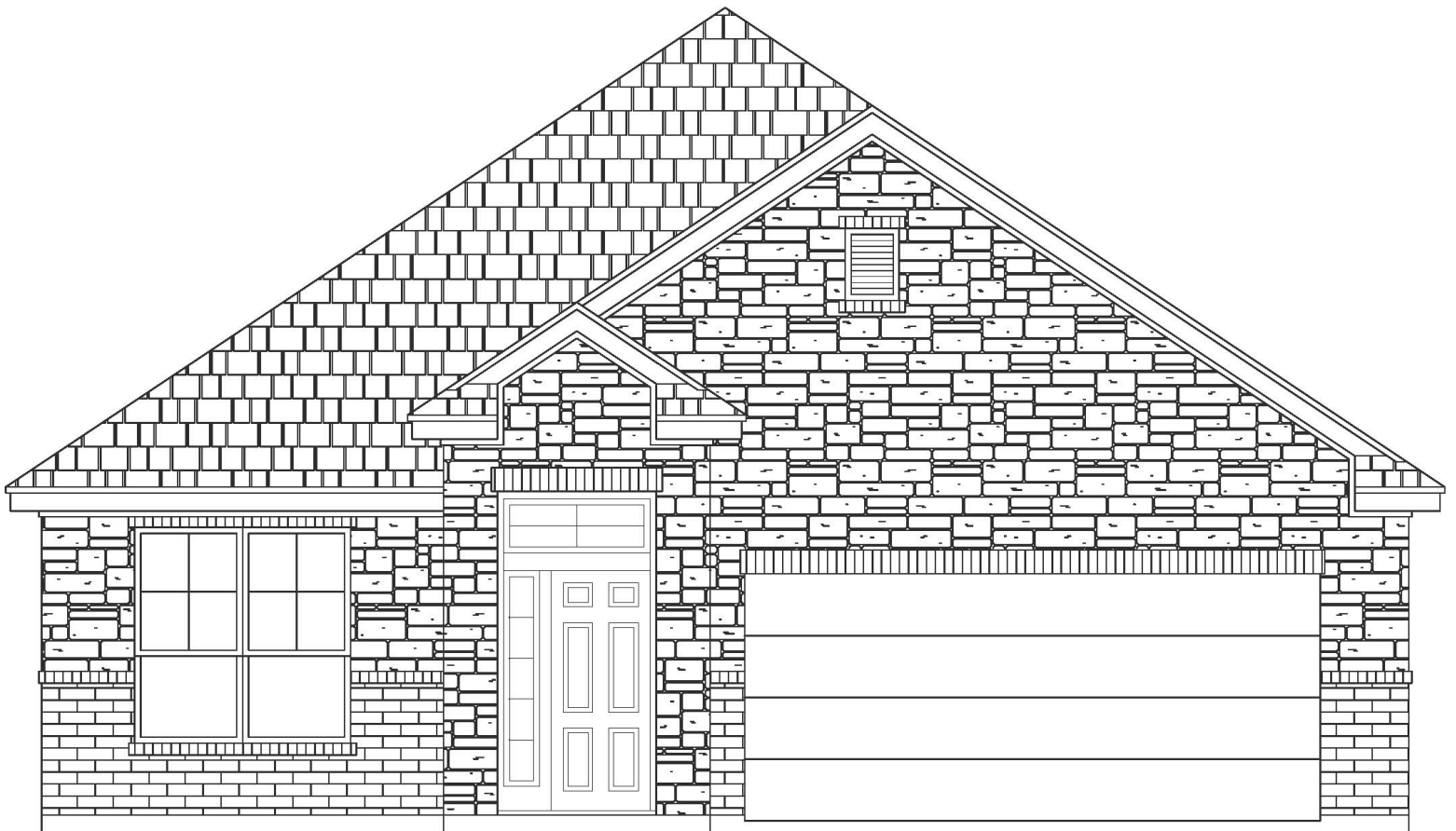


# 1438 CHALICE DRIVE

SAN MARCOS FLOOR PLAN • HILLS OF WESTWOOD WEST

 COMING SOON     4 bedrooms     2 bathrooms     sq ft: 1,920







**CONTACT US FOR MORE DETAILS!**

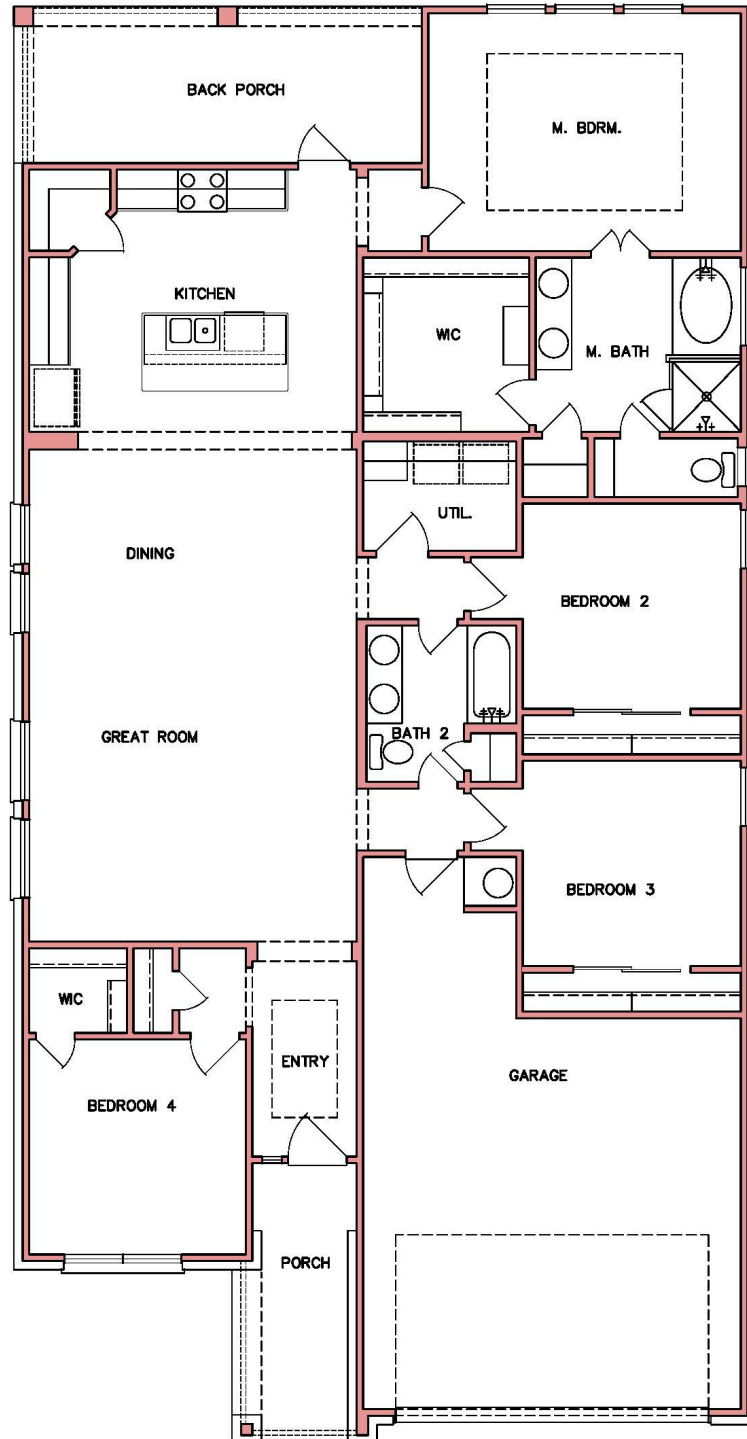
254.778.0092  
sales@kiella.com



# 1438 CHALICE DRIVE

SAN MARCOS FLOOR PLAN • HILLS OF WESTWOOD WEST

 COMING SOON
  4 bedrooms
  2 bathrooms
  sq ft: 1,920



Prices, plans, dimensions, specifications, materials & availability of homes or communities are subject to change. Illustrations are artist depictions only & may differ from completes improvements. Not all options are available in all communities. Copyright © Kiella Homebuilders