

1434 CHALICE DRIVE

SAN MARCOS FLOOR PLAN • HILLS OF WESTWOOD WEST



COMING SOON



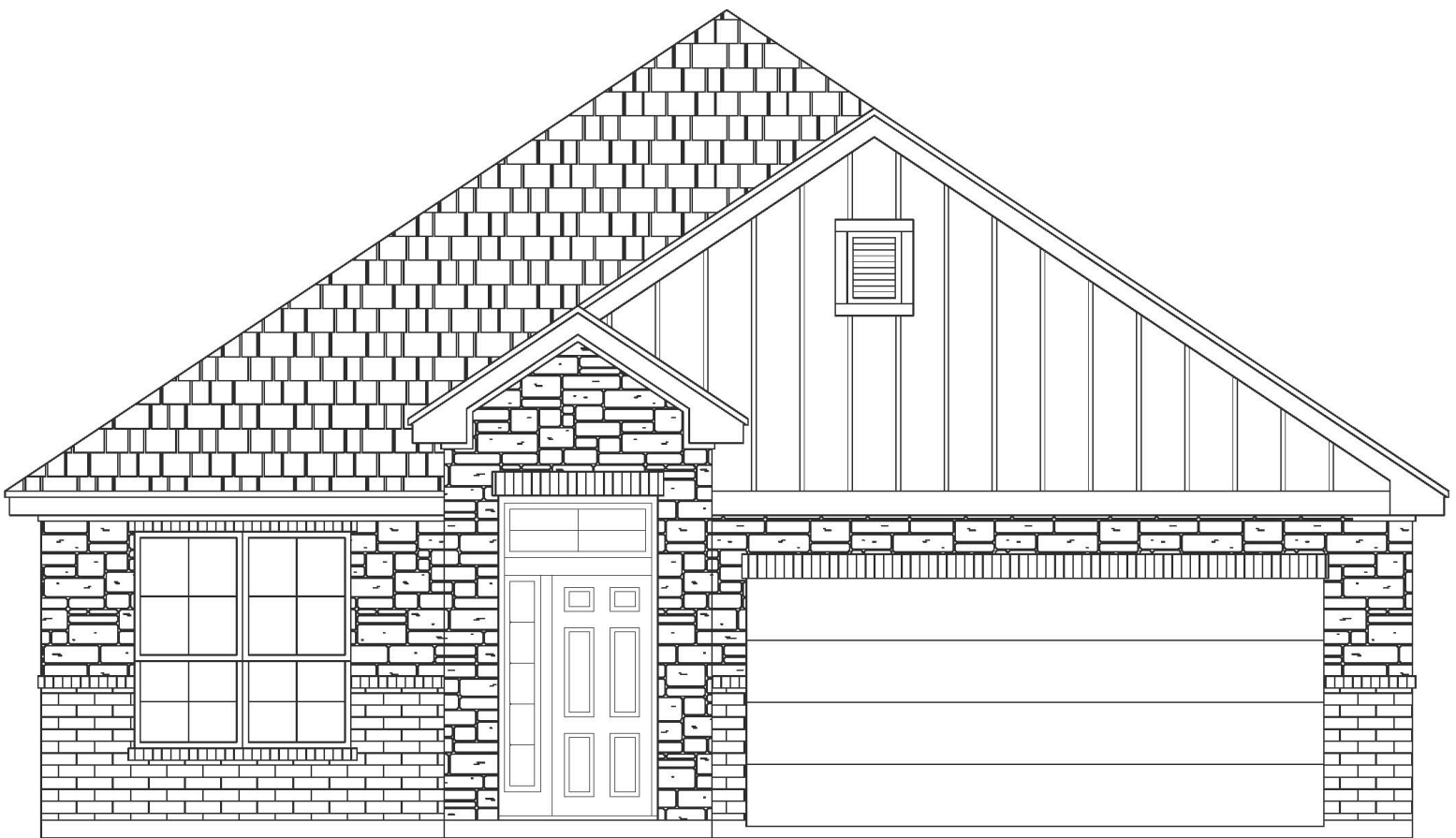
4 bedrooms



2 bathrooms



sq ft: 1,920



CONTACT US FOR MORE DETAILS!

254.778.0092
sales@kiella.com



1434 CHALICE DRIVE

SAN MARCOS FLOOR PLAN • HILLS OF WESTWOOD WEST



COMING SOON



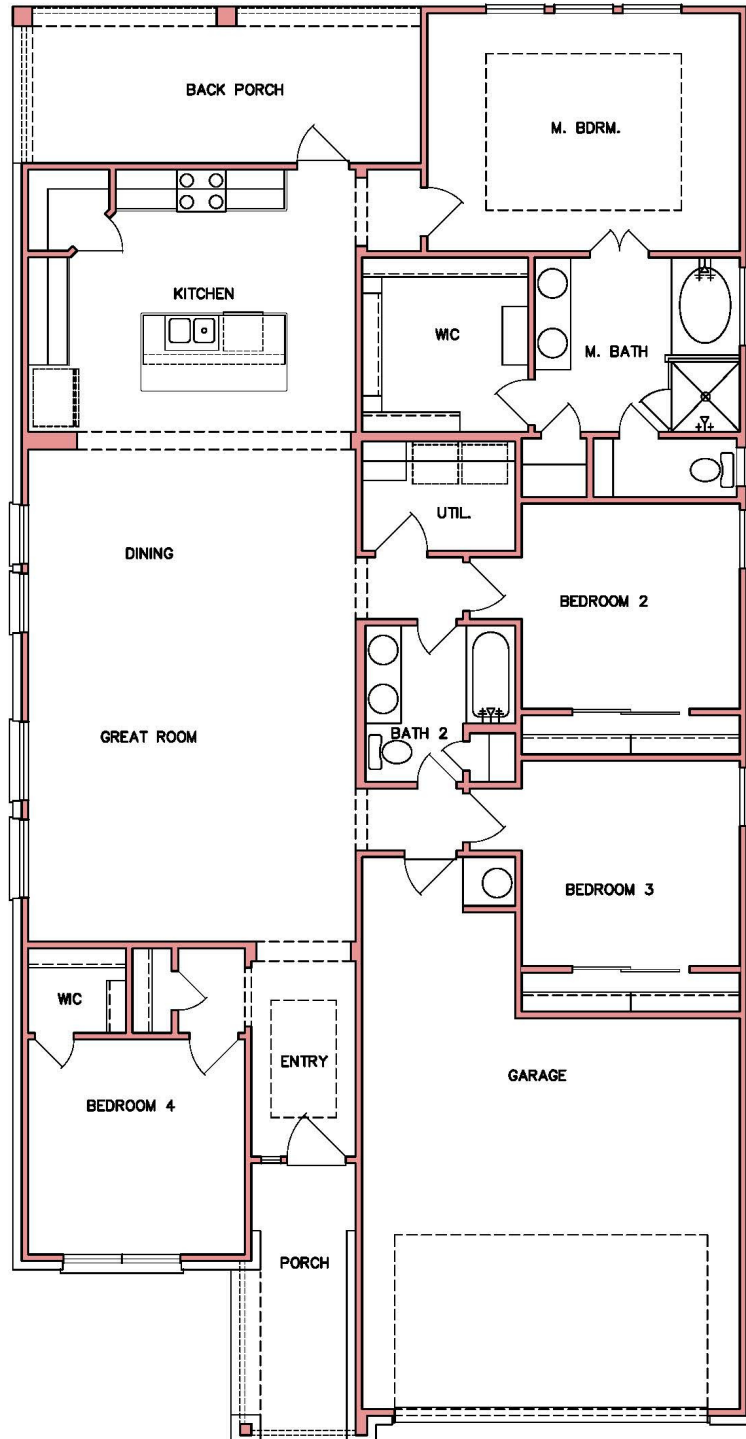
4 bedrooms



2 bathrooms



sq ft: 1,920



Prices, plans, dimensions, specifications, materials & availability of homes or communities are subject to change. Illustrations are artist depictions only & may differ from complete improvements. Not all options are available in all communities. Copyright © Kiella Homebuilders